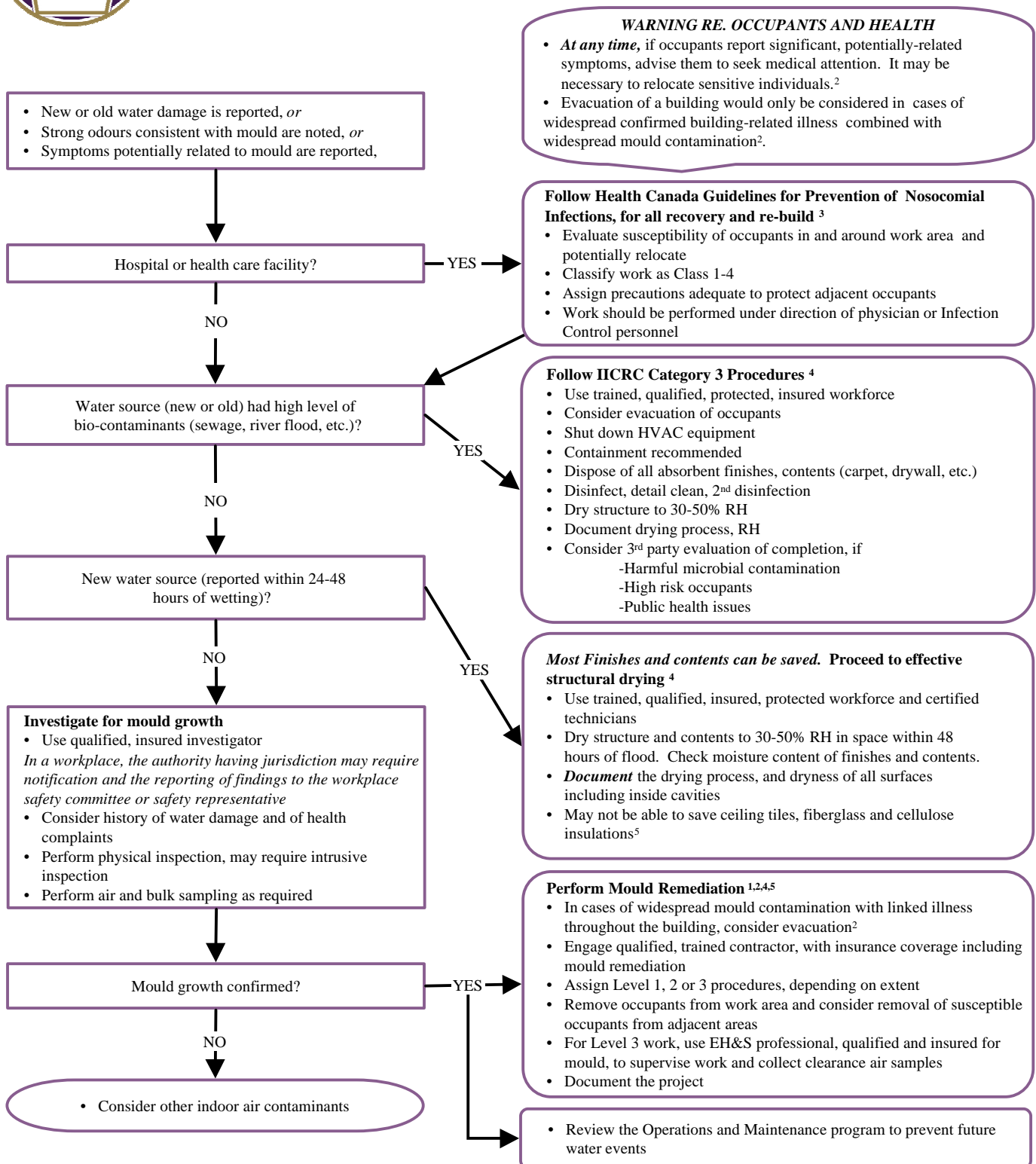




• Due Diligence in Managing Water Damage and Mould Growth in Buildings



References

- *Guidelines for the Investigation, Assessment and Remediation of Mould in Workplaces*, Manitoba Department of Labour, 2001
- *Guidelines on Assessment and Remediation of Fungi in Indoor Environments*, New York City Department of Health, 2000.
- *Construction related Nosocomial Infection in Patients in Health Care Facilities, Decreasing the Risk*, Health Canada, 2001.
- *Standard and Reference Guide for Professional Water Damage Restoration*, Institute of Inspection, Cleaning and Restoration Certification, 1999.
- *Mould Remediation in Schools and Commercial Buildings*, US Environmental Protection Agency, 2001.